

# SDHA Antibody



PACO06809

---

## Product Information

**Size:**

50ug

**Reactivity:**

Human, Mouse, Rat

**Source:**

Rabbit

**Isotype:**

IgG

**Applications:**

ELISA, WB

**Recommended dilutions:**

ELISA:1:10000, WB:1:500-1:2000

**Protein Background:**

**Gene ID:**

SDHA

**Uniprot**

P31040

**Synonyms:**

SDHA; SDH2; SDHF; Succinate dehydrogenase [ubiquinone] flavoprotein subunit; mitochondrial; Flavoprotein subunit of complex II; Fp

**Immunogen:**

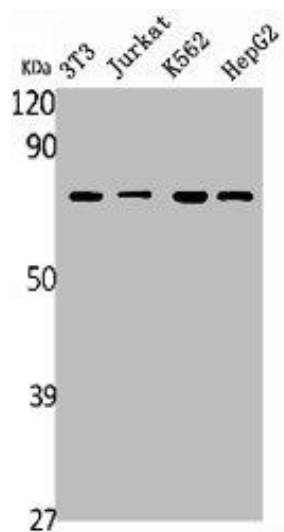
Synthesized peptide derived from the C-terminal region of human SDHA.

**Storage:**

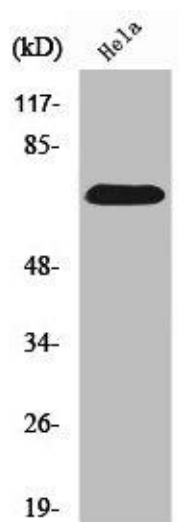
Liquid in PBS containing 50% glycerol, 0.5% BSA and 0.02% sodium azide.

## Product Images

---



Western Blot analysis of NIH-3T3 Jurkat K562 HepG2 RAT-KIDNEY cells using SDHA Polyclonal Antibody.



Western Blot analysis of HepG2 cells using SDHA Polyclonal Antibody.