

# CXCL12 Antibody



PACO06808

---

## Product Information

**Size:**

50ug

**Reactivity:**

Human, Mouse, Rat

**Source:**

Rabbit

**Isotype:**

IgG

**Applications:**

ELISA, WB, IHC

**Recommended dilutions:**

ELISA:1:40000, WB:1:500-1:2000,  
IHC:1:100-1:300

**Protein Background:**

**Gene ID:**

CXCL12

**Uniprot**

P48061

**Synonyms:**

CXCL12; SDF1; SDF1A; SDF1B; Stromal cell-derived factor 1; SDF-1; hSDF-1; C-X-C motif chemokine 12; Intercrine reduced in hepatomas; IRH; hIRH; Pre-B cell growth-stimulating factor; PBSF

**Immunogen:**

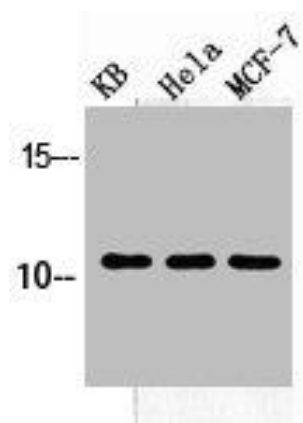
Synthesized peptide derived from the C-terminal region of human SDF-1.

**Storage:**

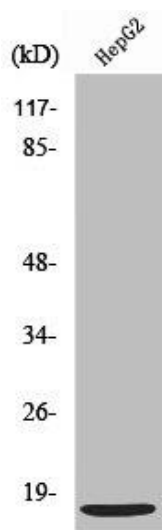
Liquid in PBS containing 50% glycerol, 0.5% BSA and 0.02% sodium azide.

## Product Images

---



Western Blot analysis of HELA KB MCF7 cells using SDF-1 Polyclonal Antibody.



Western Blot analysis of HuvEc cells using SDF-1 Polyclonal Antibody.