

RPS4Y1 Antibody



PACO06799

Product Information

Size:

50ug

Reactivity:

Human

Source:

Rabbit

Isotype:

IgG

Applications:

ELISA, WB, IHC, IF

Recommended dilutions:

ELISA:1:20000, WB:1:500-1:2000,
IHC:1:100-1:300, IF:1:200-1:1000

Protein Background:**Gene ID:**

RPS4Y1

Uniprot

P22090

Synonyms:

RPS4Y1; RPS4Y; 40S ribosomal protein S4; Y isoform 1

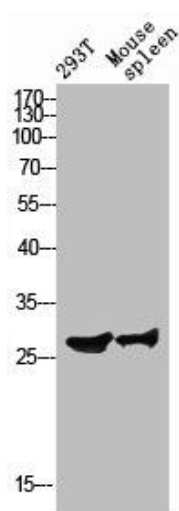
Immunogen:

Synthesized peptide derived from the C-terminal region of human Ribosomal Protein S4Y1.

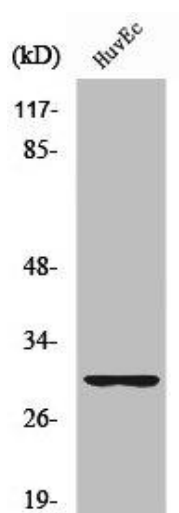
Storage:

Liquid in PBS containing 50% glycerol, 0.5% BSA and 0.02% sodium azide.

Product Images



Western blot analysis of 293T mouse-spleen lysis using Ribosomal Protein S4Y1 antibody.



Western Blot analysis of HuvEc cells using Ribosomal Protein S4Y1 Polyclonal Antibody.