

RPS4X Antibody



PACO06798

Product Information

Size:

50ug

Reactivity:

Human, Mouse, Rat

Source:

Rabbit

Isotype:

IgG

Applications:

ELISA, WB, IF

Recommended dilutions:

ELISA:1:40000, WB:1:500-1:2000, IF:1:200-1:1000

Protein Background:**Gene ID:**

RPS4X

Uniprot

P62701

Synonyms:

RPS4X; CCG2; RPS4; SCAR; 40S ribosomal protein S4; X isoform; SCR10; Single copy abundant mRNA protein

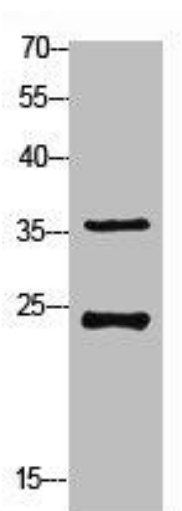
Immunogen:

Synthesized peptide derived from the Internal region of human Ribosomal Protein S4X.

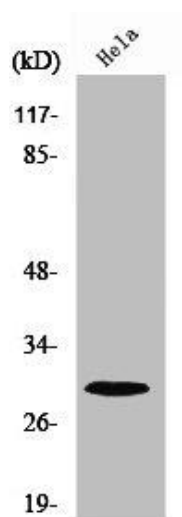
Storage:

Liquid in PBS containing 50% glycerol, 0.5% BSA and 0.02% sodium azide.

Product Images



Western Blot analysis of customer's (cat sample) using Ribosomal Protein S4X Polyclonal Antibody.



Western Blot analysis of COLO205 cells using Ribosomal Protein S4X Polyclonal Antibody.