

RAP1GAP Antibody



PACO06794

Product Information

Size:

50ug

Reactivity:

Human, Mouse

Source:

Rabbit

Isotype:

IgG

Applications:

ELISA, WB, IHC

Recommended dilutions:

ELISA:1:10000, WB:1:500-1:2000,
IHC:1:100-1:300

Protein Background:**Gene ID:**

RAP1GAP

Uniprot

P47736

Synonyms:

RAP1GAP; KIAA0474; RAP1GA1; Rap1 GTPase-activating protein 1; Rap1GAP;
Rap1GAP1

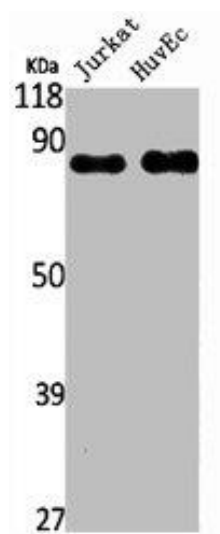
Immunogen:

Synthesized peptide derived from the C-terminal region of human Rap1GAP.

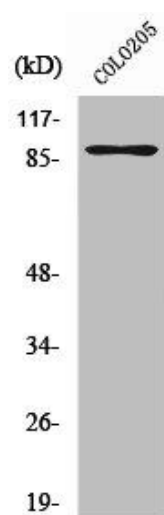
Storage:

Liquid in PBS containing 50% glycerol, 0.5% BSA and 0.02% sodium azide.

Product Images



Western Blot analysis of PC3 NIH-3T3 cells using Rap1GAP Polyclonal Antibody.



Western Blot analysis of COLO205 cells using Rap1GAP Polyclonal Antibody.