

RAD51 Antibody



PACO06790

Product Information

Size:

50ug

Reactivity:

Human, Mouse

Source:

Rabbit

Isotype:

IgG

Applications:

ELISA, WB, IHC

Recommended dilutions:

ELISA:1:20000, WB:1:500-1:2000,
IHC:1:100-1:300

Protein Background:

Gene ID:

RAD51

Uniprot

Q06609

Synonyms:

RAD51; RAD51A; RECA; DNA repair protein RAD51 homolog 1; HsRAD51; hRAD51;
RAD51 homolog A

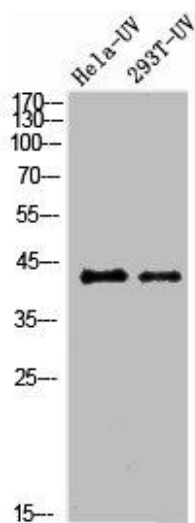
Immunogen:

Synthesized peptide derived from human Rad51 around the non-phosphorylation site of Y315.

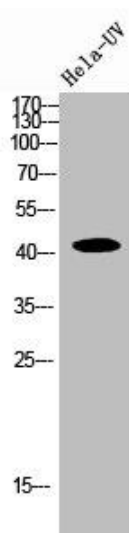
Storage:

Liquid in PBS containing 50% glycerol, 0.5% BSA and 0.02% sodium azide.

Product Images



Western Blot analysis of 293T-UV HELA-UV cells using Rad51 Polyclonal Antibody.



Western Blot analysis of HELA-UV cells using Rad51 Polyclonal Antibody.