

RAD23B Antibody



PACO06789

Product Information

Size:

50ug

Reactivity:

Human, Mouse, Rat

Source:

Rabbit

Isotype:

IgG

Applications:

ELISA, WB, IHC, IF

Recommended dilutions:

ELISA:1:20000, WB:1:500-1:2000,
IHC:1:100-1:300, IF:1:200-1:1000

Protein Background:**Gene ID:**

RAD23B

Uniprot

P54727

Synonyms:

RAD23B; UV excision repair protein RAD23 homolog B; HR23B; hHR23B; XP-C repair-complementing complex 58 kDa protein; p58

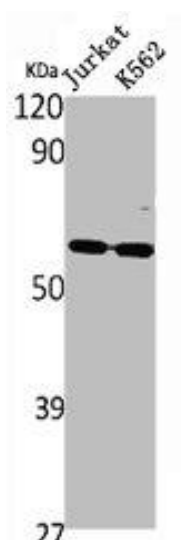
Immunogen:

Synthesized peptide derived from the N-terminal region of human Rad23B.

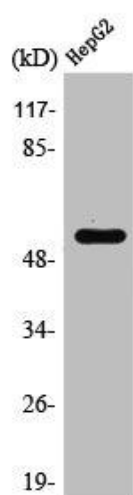
Storage:

Liquid in PBS containing 50% glycerol, 0.5% BSA and 0.02% sodium azide.

Product Images



Western Blot analysis of Jurkat K562 cells using Rad23B Polyclonal Antibody.



Western Blot analysis of HuvEc cells using Rad23B Polyclonal Antibody.