

# PTPRZ1 Antibody



PACO06783

---

## Product Information

**Size:**

50ug

**Reactivity:**

Human, Mouse, Rat

**Source:**

Rabbit

**Isotype:**

IgG

**Applications:**

ELISA, WB

**Recommended dilutions:**

ELISA:1:5000, WB:1:500-1:2000

**Protein Background:****Gene ID:**

PTPRZ1

**Uniprot**

P23471

**Synonyms:**

PTPRZ1; HTPZP2; PTPRZ; PTPRZ2; PTPZ; Receptor-type tyrosine-protein phosphatase zeta; R-PTP-zeta; Protein-tyrosine phosphatase receptor type Z polypeptide 1; Protein-tyrosine phosphatase receptor type Z polypeptide 2; R-PTP-zeta-2

**Immunogen:**

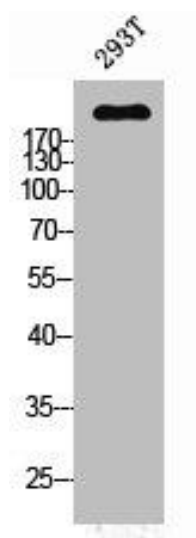
Synthesized peptide derived from the N-terminal region of human PTP zeta.

**Storage:**

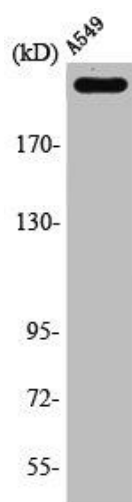
Liquid in PBS containing 50% glycerol, 0.5% BSA and 0.02% sodium azide.

## Product Images

---



Western Blot analysis of 293T cells using PTP zeta Polyclonal Antibody.



Western Blot analysis of A549 cells using PTP zeta Polyclonal Antibody.