

# PSMD2 Antibody



PACO06781

---

## Product Information

**Size:**

50ug

**Reactivity:**

Human, Mouse, Rat

**Source:**

Rabbit

**Isotype:**

IgG

**Applications:**

ELISA, WB, IHC

**Recommended dilutions:**

ELISA:1:20000, WB:1:500-1:2000,  
IHC:1:100-1:300

**Protein Background:**

**Gene ID:**

PSMD2

**Uniprot**

Q13200

**Synonyms:**

PSMD2; TRAP2; 26S proteasome non-ATPase regulatory subunit 2; 26S proteasome regulatory subunit RPN1; 26S proteasome regulatory subunit S2; 26S proteasome subunit p97; Protein 55.11; Tumor necrosis factor type 1 receptor-associated protein

**Immunogen:**

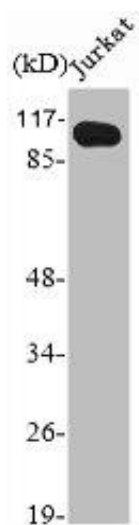
Synthesized peptide derived from the N-terminal region of human PSMD2.

**Storage:**

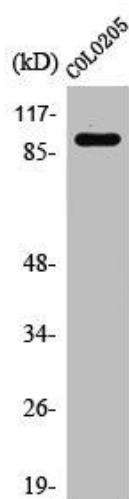
Liquid in PBS containing 50% glycerol, 0.5% BSA and 0.02% sodium azide.

## Product Images

---



Western Blot analysis of Jurkat cells using PSMD2 Polyclonal Antibody.



Western Blot analysis of 293 cells using PSMD2 Polyclonal Antibody.