

# PSMD12 Antibody



PACO06780

---

## Product Information

**Size:**

50ug

**Reactivity:**

Human, Mouse, Rat

**Source:**

Rabbit

**Isotype:**

IgG

**Applications:**

ELISA, WB, IHC

**Recommended dilutions:**

ELISA:1:40000, WB:1:500-1:2000,  
IHC:1:100-1:300

**Protein Background:****Gene ID:**

PSMD12

**Uniprot**

O00232

**Synonyms:**

PSMD12; 26S proteasome non-ATPase regulatory subunit 12; 26S proteasome regulatory subunit RPN5; 26S proteasome regulatory subunit p55

**Immunogen:**

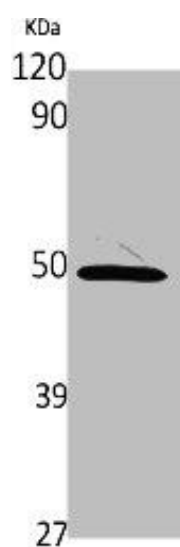
Synthesized peptide derived from the Internal region of human PSMD12.

**Storage:**

Liquid in PBS containing 50% glycerol, 0.5% BSA and 0.02% sodium azide.

## Product Images

---



Western Blot analysis of various cells using PSMD12 Polyclonal Antibody.



Western Blot analysis of HepG2 cells using PSMD12 Polyclonal Antibody.