

# PSCA Antibody



PACO06779

---

## Product Information

**Size:**

50ug

**Reactivity:**

Human, Mouse

**Source:**

Rabbit

**Isotype:**

IgG

**Applications:**

ELISA, WB

**Recommended dilutions:**

ELISA:1:20000, WB:1:500-1:2000

**Protein Background:****Gene ID:**

PSCA

**Uniprot**

O43653

**Synonyms:**

PSCA; Prostate stem cell antigen

**Immunogen:**

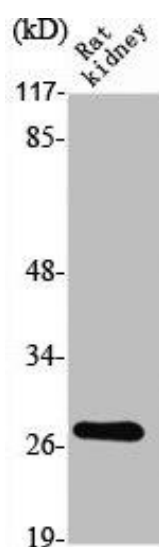
Synthesized peptide derived from the Internal region of human PSCA.

**Storage:**

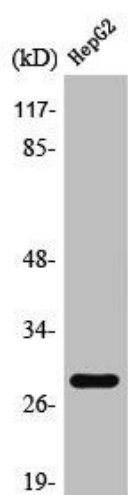
Liquid in PBS containing 50% glycerol, 0.5% BSA and 0.02% sodium azide.

## Product Images

---



Western Blot analysis of RAT-KIDNEY cells using PSCA Polyclonal Antibody.



Western Blot analysis of HepG2 cells using PSCA Polyclonal Antibody.