

# PRRX1 Antibody



PACO06778

---

## Product Information

**Size:**

50ug

**Reactivity:**

Human, Mouse, Rat

**Source:**

Rabbit

**Isotype:**

IgG

**Applications:**

ELISA, WB

**Recommended dilutions:**

ELISA:1:10000, WB:1:500-1:2000

**Protein Background:****Gene ID:**

PRRX1

**Uniprot**

P54821

**Synonyms:**

PRRX1; PMX1; Paired mesoderm homeobox protein 1; Homeobox protein PHOX1; Paired-related homeobox protein 1; PRX-1

**Immunogen:**

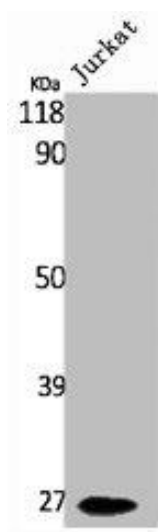
Synthesized peptide derived from the Internal region of human PRX1.

**Storage:**

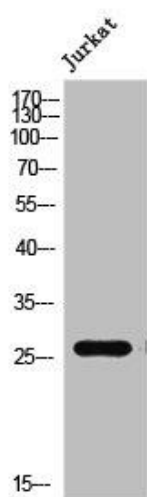
Liquid in PBS containing 50% glycerol, 0.5% BSA and 0.02% sodium azide.

## Product Images

---



Western Blot analysis of Jurkat cells using PRX1 Polyclonal Antibody.



Western Blot analysis of Jurkat cells using PRX1 Polyclonal Antibody.