

PACO06777

Product Information

Size:

50ug

Reactivity:

Human, Rat

Source:

Rabbit

Isotype:

IgG

Applications:

ELISA, WB, IHC

Recommended dilutions:

ELISA:1:20000, WB:1:500-1:2000,
IHC:1:100-1:300

Protein Background:

Gene ID:

PRPH

Uniprot

P41219

Synonyms:

PRPH; NEF4; PRPH1; Peripherin; Neurofilament 4

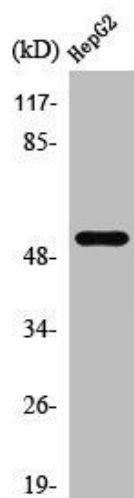
Immunogen:

Synthesized peptide derived from the C-terminal region of human PRPH.

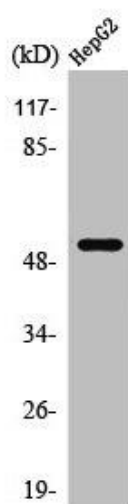
Storage:

Liquid in PBS containing 50% glycerol, 0.5% BSA and 0.02% sodium azide.

Product Images



Western Blot analysis of HepG2 cells using PRPH Polyclonal Antibody.



Western Blot analysis of HepG2 cells using PRPH Polyclonal Antibody.