

POLR3E Antibody



PACO06772

Product Information

Size:

50ug

Reactivity:

Human, Mouse

Source:

Rabbit

Isotype:

IgG

Applications:

ELISA, WB, IHC, IF

Recommended dilutions:

ELISA:1:40000, WB:1:500-1:2000,
IHC:1:100-1:300, IF:1:200-1:1000

Protein Background:**Gene ID:**

POLR3E

Uniprot

Q9NVU0

Synonyms:

POLR3E; KIAA1452; DNA-directed RNA polymerase III subunit RPC5; RNA polymerase III subunit C5; DNA-directed RNA polymerase III 80 kDa polypeptide

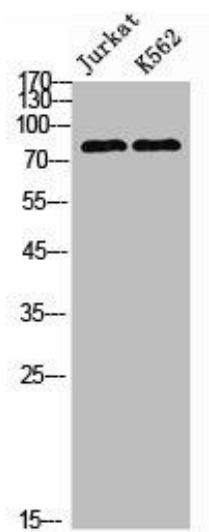
Immunogen:

Synthesized peptide derived from the Internal region of human POLR3E.

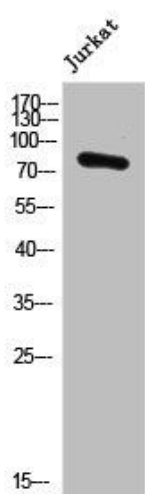
Storage:

Liquid in PBS containing 50% glycerol, 0.5% BSA and 0.02% sodium azide.

Product Images



Western Blot analysis of Jurkat K562 cells using POLR3E Polyclonal Antibody.



Western Blot analysis of JK cells using POLR3E Polyclonal Antibody.