

PMS1 Antibody



PACO06771

Product Information

Size:

50ug

Reactivity:

Human

Source:

Rabbit

Isotype:

IgG

Applications:

ELISA, WB, IHC

Recommended dilutions:

ELISA:1:10000, WB:1:500-1:2000,
IHC:1:100-1:300

Protein Background:

Gene ID:

PMS1

Uniprot

P54277

Synonyms:

PMS1; PMSL1; PMS1 protein homolog 1; DNA mismatch repair protein PMS1

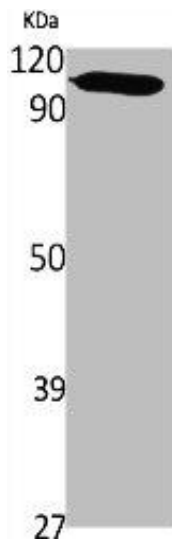
Immunogen:

Synthesized peptide derived from the Internal region of human PMS1.

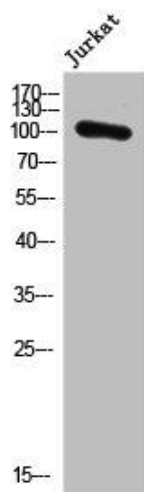
Storage:

Liquid in PBS containing 50% glycerol, 0.5% BSA and 0.02% sodium azide.

Product Images



Western Blot analysis of various cells using PMS1 Polyclonal Antibody.



Western Blot analysis of Jurkat cells using PMS1 Polyclonal Antibody.