

# PKP2 Antibody



PACO06766

---

## Product Information

**Size:**

50ug

**Reactivity:**

Human, Rat

**Source:**

Rabbit

**Isotype:**

IgG

**Applications:**

ELISA, WB

**Recommended dilutions:**

ELISA:1:20000, WB:1:500-1:2000

**Protein Background:****Gene ID:**

PKP2

**Uniprot**

Q99959

**Synonyms:**

PKP2; Plakophilin-2

**Immunogen:**

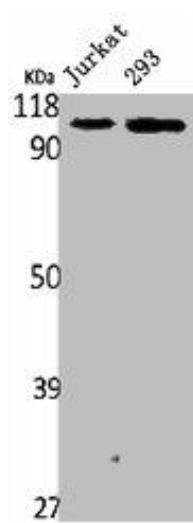
Synthesized peptide derived from the C-terminal region of human Plakophilin 2.

**Storage:**

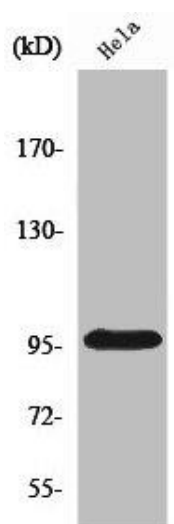
Liquid in PBS containing 50% glycerol, 0.5% BSA and 0.02% sodium azide.

## Product Images

---



Western Blot analysis of Jurakt 293 cells using Plakophilin 2 Polyclonal Antibody.



Western Blot analysis of HepG2 cells using Plakophilin 2 Polyclonal Antibody.