

PITX1 Antibody



PACO06754

Product Information

Size:

50ug

Reactivity:

Human, Mouse, Rat

Source:

Rabbit

Isotype:

IgG

Applications:

ELISA, WB, IHC

Recommended dilutions:

ELISA:1:20000, WB:1:500-1:2000,
IHC:1:100-1:300

Protein Background:**Gene ID:**

PITX1

Uniprot

P78337

Synonyms:

PITX1; BFT; PTX1; Pituitary homeobox 1; Hindlimb-expressed homeobox protein backfoot; Homeobox protein PITX1; Paired-like homeodomain transcription factor 1

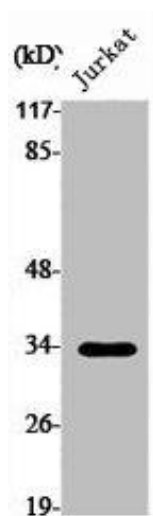
Immunogen:

Synthesized peptide derived from the Internal region of human Pitx1.

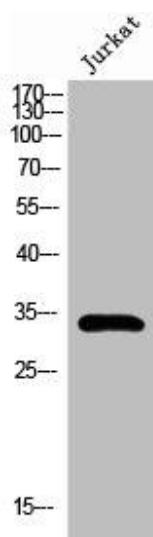
Storage:

Liquid in PBS containing 50% glycerol, 0.5% BSA and 0.02% sodium azide.

Product Images



Western Blot analysis of Jurkat cells using Pitx1 Polyclonal Antibody.



Western Blot analysis of Jurkat cells using Pitx1 Polyclonal Antibody.