

# PCNA Antibody



PACO06738

---

## Product Information

**Size:**

50ug

**Reactivity:**

Human, Mouse, Rat, Monkey

**Source:**

Rabbit

**Isotype:**

IgG

**Applications:**

ELISA, WB, IHC

**Recommended dilutions:**

ELISA:1:20000, WB:1:500-1:2000,  
IHC:1:100-1:300

**Protein Background:**

**Gene ID:**

PCNA

**Uniprot**

P12004

**Synonyms:**

PCNA; Proliferating cell nuclear antigen; PCNA; Cyclin

**Immunogen:**

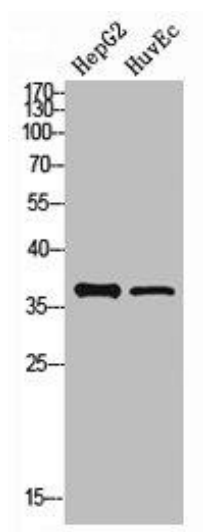
Synthesized peptide derived from the Internal region of human PCNA.

**Storage:**

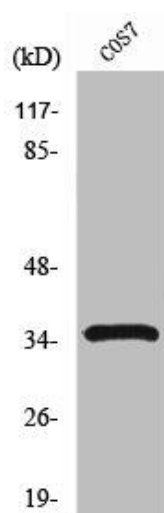
Liquid in PBS containing 50% glycerol, 0.5% BSA and 0.02% sodium azide.

## Product Images

---



Western Blot analysis of HepG2 HuvEc cells using PCNA Polyclonal Antibody.



Western Blot analysis of COS7 cells using PCNA Polyclonal Antibody.