

RPS6KB2 Antibody



PACO06732

Product Information

Size:

50ug

Reactivity:

Human, Mouse

Source:

Rabbit

Isotype:

IgG

Applications:

ELISA, WB, IHC

Recommended dilutions:

ELISA:1:5000, WB:1:500-1:2000, IHC:1:100-1:300

Protein Background:**Gene ID:**

RPS6KB2

Uniprot

Q9UBS0

Synonyms:

RPS6KB2; STK14B; Ribosomal protein S6 kinase beta-2; S6K-beta-2; S6K2; 70 kDa ribosomal protein S6 kinase 2; P70S6K2; p70-S6K 2; S6 kinase-related kinase; SRK; Serine/threonine-protein kinase 14B; p70 ribosomal S6 kinase beta; S6K-beta; p70

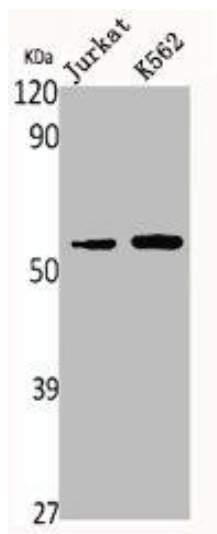
Immunogen:

Synthesized peptide derived from human p70 S6 kinase β around the non-phosphorylation site of S423.

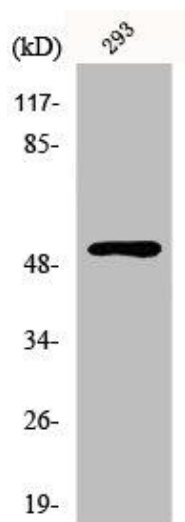
Storage:

Liquid in PBS containing 50% glycerol, 0.5% BSA and 0.02% sodium azide.

Product Images



Western Blot analysis of Jurkat K562 cells using p70 S6 kinase beta Polyclonal Antibody.



Western Blot analysis of 293 cells using p70 S6 kinase beta Polyclonal Antibody.