

CDK5R1 Antibody



PACO06723

Product Information

Size:

50ug

Reactivity:

Human, Mouse, Rat

Source:

Rabbit

Isotype:

IgG

Applications:

ELISA, WB, IHC, IF

Recommended dilutions:

ELISA:1:20000, WB:1:500-1:2000,
IHC:1:100-1:300, IF:1:200-1:1000

Protein Background:**Gene ID:**

CDK5R1

Uniprot

Q15078

Synonyms:

CDK5R1; CDK5R; NCK5A; Cyclin-dependent kinase 5 activator 1; CDK5 activator 1;
Cyclin-dependent kinase 5 regulatory subunit 1; TPKII regulatory subunit

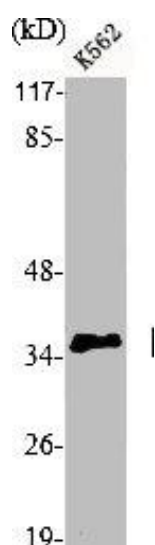
Immunogen:

Synthesized peptide derived from the N-terminal region of human p35.

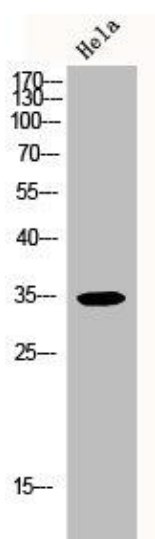
Storage:

Liquid in PBS containing 50% glycerol, 0.5% BSA and 0.02% sodium azide.

Product Images



Western Blot analysis of K562 cells using p35 Polyclonal Antibody.



Western Blot analysis of HELA cells using p35 Polyclonal Antibody.