

# CDKN1A Antibody



PACO06719

---

## Product Information

**Size:**

50ug

**Reactivity:**

Human, Mouse, Rat

**Source:**

Rabbit

**Isotype:**

IgG

**Applications:**

ELISA, WB

**Recommended dilutions:**

ELISA:1:20000, WB:1:500-1:2000

**Protein Background:**

**Gene ID:**

CDKN1A

**Uniprot**

P38936

**Synonyms:**

CDKN1A; CAP20; CDKN1; CIP1; MDA6; PIC1; SDI1; WAF1; Cyclin-dependent kinase inhibitor 1; CDK-interacting protein 1; Melanoma differentiation-associated protein 6; MDA-6; p21

**Immunogen:**

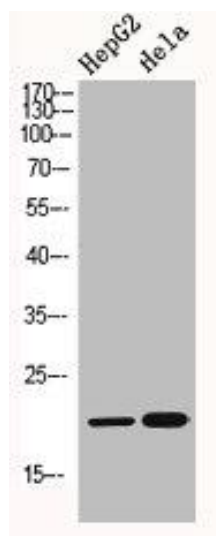
Synthesized peptide derived from human p21 around the non-phosphorylation site of T145.

**Storage:**

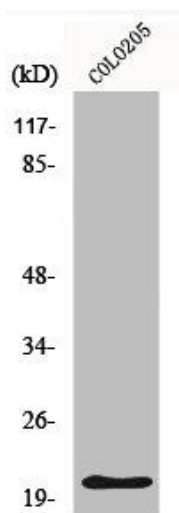
Liquid in PBS containing 50% glycerol, 0.5% BSA and 0.02% sodium azide.

## Product Images

---



Western Blot analysis of HepG2 HELA cells using p21 Polyclonal Antibody.



Western Blot analysis of COLO205 cells using p21 Polyclonal Antibody.