

OR4X1 Antibody



PACO06711

Product Information

Size:

50ug

Reactivity:

Human

Source:

Rabbit

Isotype:

IgG

Applications:

ELISA, WB, IF

Recommended dilutions:

ELISA:1:20000, WB:1:500-1:2000, IF:1:200-1:1000

Protein Background:

Gene ID:

OR4X1

Uniprot

Q8NH49

Synonyms:

OR4X1; Olfactory receptor 4X1; Olfactory receptor OR11-104

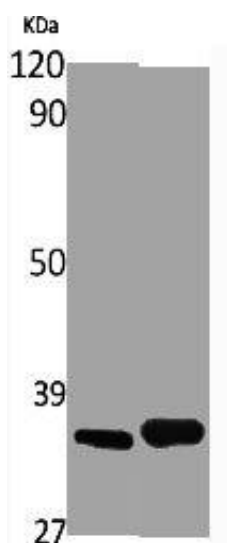
Immunogen:

Synthesized peptide derived from the C-terminal region of human Olfactory receptor 4X1.

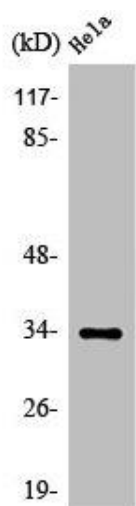
Storage:

Liquid in PBS containing 50% glycerol, 0.5% BSA and 0.02% sodium azide.

Product Images



Western Blot analysis of various cells using Olfactory receptor 4X1 Polyclonal Antibody.



Western Blot analysis of COLO205 cells using Olfactory receptor 4X1 Polyclonal Antibody.