

OR1S2/OR1S1 Antibody



PACO06710

Product Information

Size:

50ug

Reactivity:

Human

Source:

Rabbit

Isotype:

IgG

Applications:

ELISA, WB, IF

Recommended dilutions:

ELISA:1:20000, WB:1:500-1:2000, IF:1:200-1:1000

Protein Background:

Gene ID:

OR1S2/OR1S1

Uniprot

Q8NGQ3/Q8NH92

Synonyms:

OR1S2; Olfactory receptor 1S2; Olfactory receptor OR11-231; OR1S1; Olfactory receptor 1S1; Olfactory receptor OR11-232

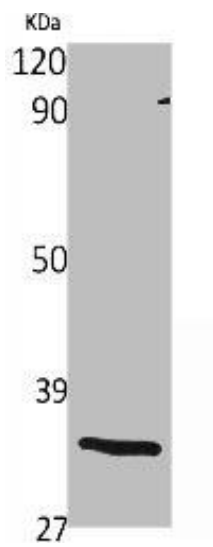
Immunogen:

Synthesized peptide derived from the C-terminal region of human Olfactory receptor 1S1/2.

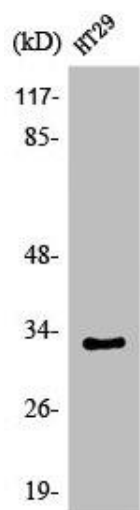
Storage:

Liquid in PBS containing 50% glycerol, 0.5% BSA and 0.02% sodium azide.

Product Images



Western Blot analysis of various cells using Olfactory receptor 1S1/2 Polyclonal Antibody.



Western Blot analysis of HuvEc cells using Olfactory receptor 1S1/2 Polyclonal Antibody.