

SLCO1A2 Antibody



PACO06705

Product Information

Size:

50ug

Reactivity:

Human

Source:

Rabbit

Isotype:

IgG

Applications:

ELISA, WB, IHC

Recommended dilutions:

ELISA:1:20000, WB:1:500-1:2000,
IHC:1:100-1:300

Protein Background:

Gene ID:

SLCO1A2

Uniprot

P46721

Synonyms:

SLCO1A2; OATP; OATP1; OATP1A2; SLC21A3; Solute carrier organic anion transporter family member 1A2; OATP-A; Organic anion-transporting polypeptide 1; OATP-1; Sodium-independent organic anion transporter; Solute carrier family 21 member 3

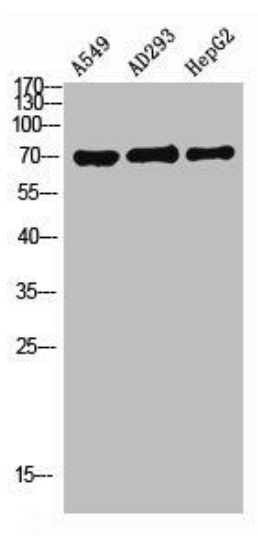
Immunogen:

Synthesized peptide derived from the Internal region of human OATP1.

Storage:

Liquid in PBS containing 50% glycerol, 0.5% BSA and 0.02% sodium azide.

Product Images



Western Blot analysis of A549 AD293 HEPG2 using OATP1 Polyclonal Antibody.



Western Blot analysis of HepG2 cells using OATP1 Polyclonal Antibody.