

# NFE2L3 Antibody



PACO06700

---

## Product Information

**Size:**

50ug

**Reactivity:**

Human

**Source:**

Rabbit

**Isotype:**

IgG

**Applications:**

ELISA, WB

**Recommended dilutions:**

ELISA:1:10000, WB:1:500-1:2000

**Protein Background:**

**Gene ID:**

NFE2L3

**Uniprot**

Q9Y4A8

**Synonyms:**

NFE2L3; NRF3; Nuclear factor erythroid 2-related factor 3; NF-E2-related factor 3; NFE2-related factor 3; Nuclear factor; erythroid derived 2, like 3

**Immunogen:**

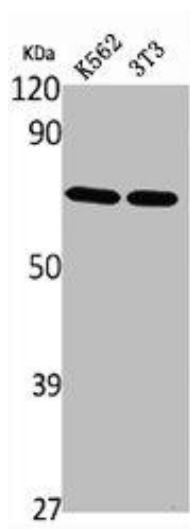
Synthesized peptide derived from the Internal region of human Nrf3.

**Storage:**

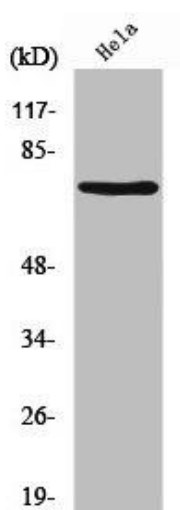
Liquid in PBS containing 50% glycerol, 0.5% BSA and 0.02% sodium azide.

## Product Images

---



Western Blot analysis of K562 NIH-3T3 cells using Nrf3 Polyclonal Antibody.



Western Blot analysis of HeLa cells using Nrf3 Polyclonal Antibody.