

SLC9A9 Antibody



PACO06691

Product Information

Size:

50ug

Reactivity:

Human, Mouse

Source:

Rabbit

Isotype:

IgG

Applications:

ELISA, WB

Recommended dilutions:

ELISA:1:40000, WB:1:500-1:2000

Protein Background:**Gene ID:**

SLC9A9

Uniprot

Q8IVB4

Synonyms:

SLC9A9; NHE9; Nbla00118; Sodium/hydrogen exchanger 9; Na(+)/H(+) exchanger 9; NHE-9; Solute carrier family 9 member 9

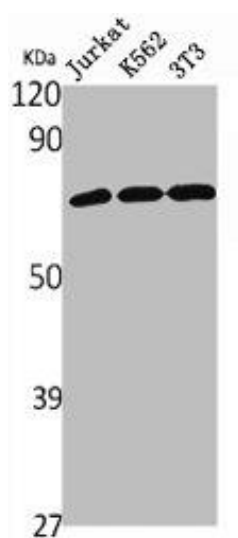
Immunogen:

Synthesized peptide derived from the Internal region of human NHE-9.

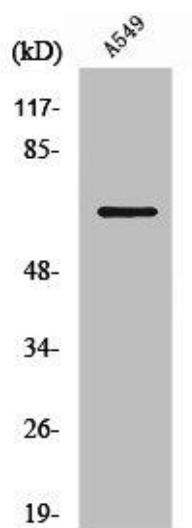
Storage:

Liquid in PBS containing 50% glycerol, 0.5% BSA and 0.02% sodium azide.

Product Images



Western Blot analysis of Jurkat K562 NIH-3T3 cells using NHE-9 Polyclonal Antibody.



Western Blot analysis of RAW264.7 cells using NHE-9 Polyclonal Antibody.