

PACO06690

---

## Product Information

**Size:**

50ug

**Reactivity:**

Human, Mouse, Rat

**Source:**

Rabbit

**Isotype:**

IgG

**Applications:**

ELISA, WB, IF

**Recommended dilutions:**

ELISA:1:40000, WB:1:500-1:2000, IF:1:200-1:1000

**Protein Background:**

**Gene ID:**

NGFR

**Uniprot**

P08138

**Synonyms:**

NGFR; TNFRSF16; Tumor necrosis factor receptor superfamily member 16; Gp80-LNGFR; Low affinity neurotrophin receptor p75NTR; Low-affinity nerve growth factor receptor; NGF receptor; p75 ICD; CD antigen CD271

**Immunogen:**

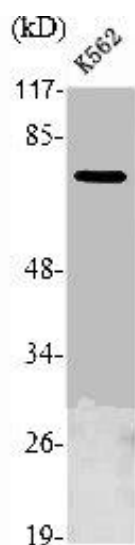
Synthesized peptide derived from the Internal region of human NGFR p75.

**Storage:**

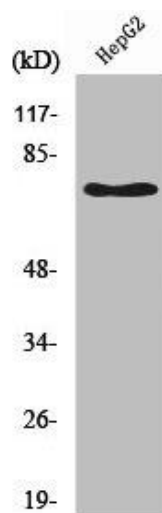
Liquid in PBS containing 50% glycerol, 0.5% BSA and 0.02% sodium azide.

## Product Images

---



Western Blot analysis of K562 cells using NGFR p75 Polyclonal Antibody.



Western Blot analysis of HepG2 cells using NGFR p75 Polyclonal Antibody.