

PACO06680

Product Information

Size:

50ug

Reactivity:

Human, Mouse, Rat

Source:

Rabbit

Isotype:

IgG

Applications:

ELISA, WB, IHC

Recommended dilutions:

ELISA:1:10000, WB:1:500-1:2000,
IHC:1:100-1:300

Protein Background:

Gene ID:

NFYC

Uniprot

Q13952

Synonyms:

NFYC; Nuclear transcription factor Y subunit gamma; CAAT box DNA-binding protein subunit C; Nuclear transcription factor Y subunit C; NF-YC; Transactivator HSM-1/2

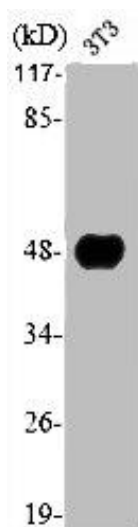
Immunogen:

Synthesized peptide derived from the N-terminal region of human NF-YC.

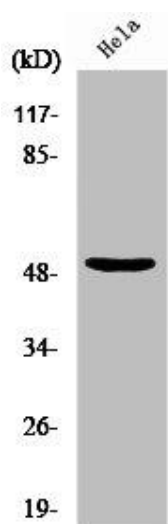
Storage:

Liquid in PBS containing 50% glycerol, 0.5% BSA and 0.02% sodium azide.

Product Images



Western Blot analysis of NIH-3T3 cells using NF-YC Polyclonal Antibody.



Western Blot analysis of 293 cells using NF-YC Polyclonal Antibody.