

# NFRKB Antibody



PACO06679

---

## Product Information

**Size:**

50ug

**Reactivity:**

Human, Mouse, Monkey

**Source:**

Rabbit

**Isotype:**

IgG

**Applications:**

ELISA, WB

**Recommended dilutions:**

ELISA:1:40000, WB:1:500-1:2000

**Protein Background:****Gene ID:**

NFRKB

**Uniprot**

Q6P4R8

**Synonyms:**

NFRKB; INO80G; Nuclear factor related to  $\kappa$ -B-binding protein; DNA-binding protein R  $\kappa$ -B; INO80 complex subunit G

**Immunogen:**

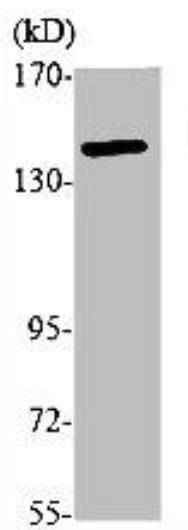
Synthesized peptide derived from the Internal region of human NFR  $\kappa$ -B.

**Storage:**

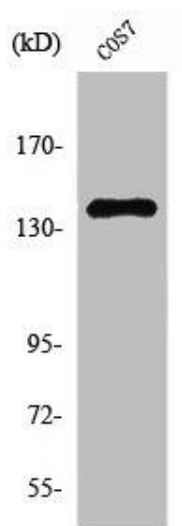
Liquid in PBS containing 50% glycerol, 0.5% BSA and 0.02% sodium azide.

## Product Images

---



Western Blot analysis of various cells using NFR kappa B Polyclonal Antibody.



Western Blot analysis of COS7 cells using NFR kappa B Polyclonal Antibody.