

CSPG5 Antibody



PACO06678

Product Information

Size:

50ug

Reactivity:

Human, Mouse, Rat

Source:

Rabbit

Isotype:

IgG

Applications:

ELISA, WB

Recommended dilutions:

ELISA:1:40000, WB:1:500-1:2000

Protein Background:

Gene ID:

CSPG5

Uniprot

O95196

Synonyms:

CSPG5; CALEB; NGC; Chondroitin sulfate proteoglycan 5; acid, c leucine-rich EGF-like domain-containing brain protein; Neuroglycan C

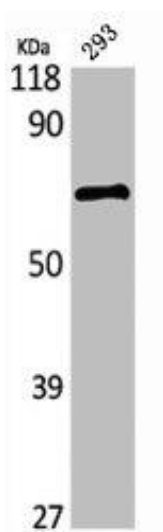
Immunogen:

Synthesized peptide derived from the Internal region of human Neuroglycan C.

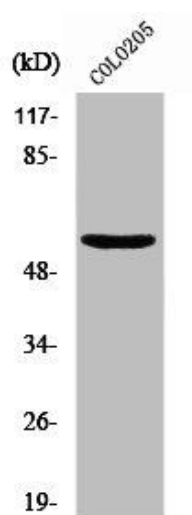
Storage:

Liquid in PBS containing 50% glycerol, 0.5% BSA and 0.02% sodium azide.

Product Images



Western Blot analysis of 293 cells using Neuroglycan C Polyclonal Antibody.



Western Blot analysis of HeLa cells using Neuroglycan C Polyclonal Antibody.