

L1CAM Antibody



PACO06672

Product Information

Size:

50ug

Reactivity:

Human, Mouse, Rat

Source:

Rabbit

Isotype:

IgG

Applications:

ELISA, WB, IHC, IF

Recommended dilutions:

ELISA:1:20000, WB:1:500-1:2000,
IHC:1:100-1:300, IF:1:200-1:1000

Protein Background:

Gene ID:

L1CAM

Uniprot

P32004

Synonyms:

L1CAM; CAML1; MIC5; Neural cell adhesion molecule L1; N-CAM-L1; NCAM-L1; CD antigen CD171

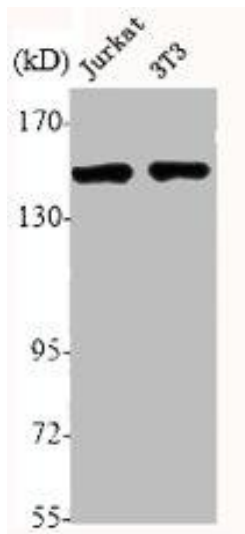
Immunogen:

Synthesized peptide derived from human NCAM-L1 around the non-phosphorylation site of S1181.

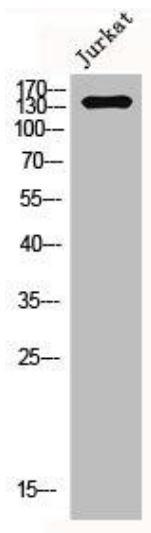
Storage:

Liquid in PBS containing 50% glycerol, 0.5% BSA and 0.02% sodium azide.

Product Images



Western Blot analysis of Jurkat NIH-3T3 cells using NCAM-L1 Polyclonal Antibody.



Western Blot analysis of Jurkat cells using NCAM-L1 Polyclonal Antibody.