

N4BP1 Antibody



PACO06669

Product Information

Size:

50ug

Reactivity:

Human

Source:

Rabbit

Isotype:

IgG

Applications:

ELISA, WB, IHC

Recommended dilutions:

ELISA:1:40000, WB:1:500-1:2000,
IHC:1:100-1:300

Protein Background:

Gene ID:

N4BP1

Uniprot

O75113

Synonyms:

N4BP1; KIAA0615; NEDD4-binding protein 1; N4BP1

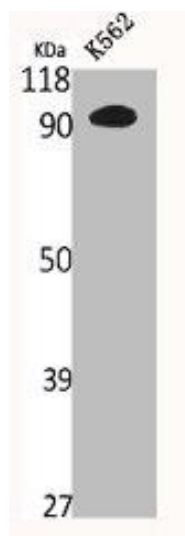
Immunogen:

Synthesized peptide derived from the Internal region of human N4BP1.

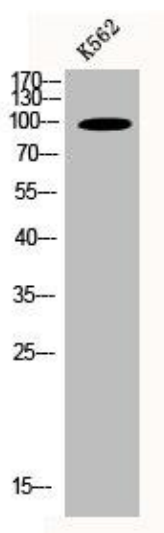
Storage:

Liquid in PBS containing 50% glycerol, 0.5% BSA and 0.02% sodium azide.

Product Images



Western Blot analysis of K562 cells using N4BP1 Polyclonal Antibody.



Western Blot analysis of K562 cells using N4BP1 Polyclonal Antibody.