

# MYLIP Antibody



PACO06664

---

## Product Information

**Size:**

50ug

**Reactivity:**

Human, Mouse, Rat

**Source:**

Rabbit

**Isotype:**

IgG

**Applications:**

ELISA, WB, IHC

**Recommended dilutions:**

ELISA:1:20000, WB:1:500-1:2000,  
IHC:1:100-1:300

**Protein Background:**

**Gene ID:**

MYLIP

**Uniprot**

Q8WY64

**Synonyms:**

MYLIP; BZF1; IDOL; BM-023; PP5242; E3 ubiquitin-protein ligase MYLIP; Inducible degrader of the LDL-receptor; Idol; Myosin regulatory light chain interacting protein; MIR

**Immunogen:**

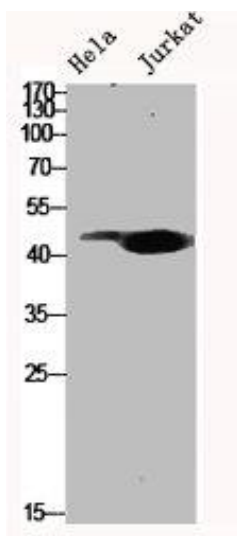
Synthesized peptide derived from the Internal region of human MYLIP.

**Storage:**

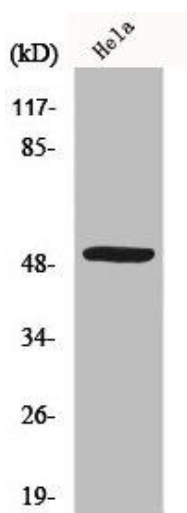
Liquid in PBS containing 50% glycerol, 0.5% BSA and 0.02% sodium azide.

## Product Images

---



Western Blot analysis of HeLa Jurkat cells using MYLIP Polyclonal Antibody.



Western Blot analysis of Jurkat cells using MYLIP Polyclonal Antibody.