

MRPL10 Antibody



PACO06653

Product Information

Size:

50ug

Reactivity:

Human

Source:

Rabbit

Isotype:

IgG

Applications:

ELISA, WB, IHC

Recommended dilutions:

ELISA:1:20000, WB:1:500-1:2000,
IHC:1:100-1:300

Protein Background:

Gene ID:

MRPL10

Uniprot

Q7Z7H8

Synonyms:

MRPL10; MRPL8; RPML8; 39S ribosomal protein L10; mitochondrial; L10mt; MRP-L10;
39S ribosomal protein L8, mitochondrial; L8mt; MRP-L8

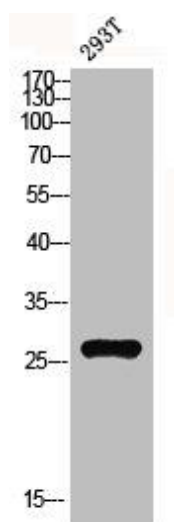
Immunogen:

Synthesized peptide derived from the C-terminal region of human MRP-L10.

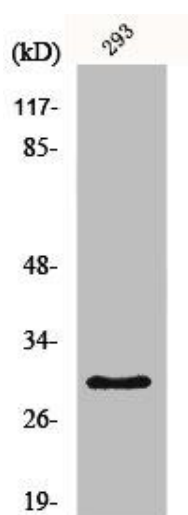
Storage:

Liquid in PBS containing 50% glycerol, 0.5% BSA and 0.02% sodium azide.

Product Images



Western blot analysis of 293T lysis using MRP-L10 antibody.



Western Blot analysis of COLO205 cells using MRP-L10 Polyclonal Antibody.