

MAP3K13 Antibody



PACO06621

Product Information

Size:

50ug

Reactivity:

Human, Mouse, Rat

Source:

Rabbit

Isotype:

IgG

Applications:

ELISA, WB, IHC

Recommended dilutions:

ELISA:1:20000, WB:1:500-1:2000,
IHC:1:100-1:300

Protein Background:**Gene ID:**

MAP3K13

Uniprot

O43283

Synonyms:

MAP3K13; LZK; Mitogen-activated protein kinase kinase kinase 13; Leucine zipper-bearing kinase; Mixed lineage kinase; MLK

Immunogen:

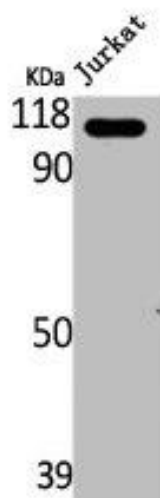
Synthesized peptide derived from the Internal region of human LZK.

Storage:

Liquid in PBS containing 50% glycerol, 0.5% BSA and 0.02% sodium azide.

Product Images

Western Blot analysis of Jurkat cells using LZK Polyclonal Antibody.



Western Blot analysis of HepG2 cells using LZK Polyclonal Antibody.

