

LRRC41 Antibody



PACO06618

Product Information

Size:

50ug

Reactivity:

Human, Mouse, Rat

Source:

Rabbit

Isotype:

IgG

Applications:

ELISA, WB, IHC

Recommended dilutions:

ELISA:1:5000, WB:1:500-1:2000, IHC:1:100-1:300

Protein Background:

Gene ID:

LRRC41

Uniprot

Q15345

Synonyms:

LRRC41; MUF1; PP7759; Leucine-rich repeat-containing protein 41; Protein Muf1

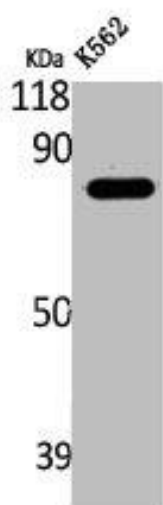
Immunogen:

Synthesized peptide derived from the Internal region of human LRRC41.

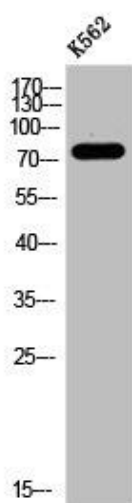
Storage:

Liquid in PBS containing 50% glycerol, 0.5% BSA and 0.02% sodium azide.

Product Images



Western Blot analysis of K562 cells using LRRC41 Polyclonal Antibody.



Western Blot analysis of K562 cells using LRRC41 Polyclonal Antibody.