

PACO06612

Product Information

Size:

50ug

Reactivity:

Human, Mouse, Rat

Source:

Rabbit

Isotype:

IgG

Applications:

ELISA, WB

Recommended dilutions:

ELISA:1:40000, WB:1:500-1:2000

Protein Background:**Gene ID:**

LCK

Uniprot

P06239

Synonyms:

LCK; Tyrosine-protein kinase Lck; Leukocyte C-terminal Src kinase; LSK; Lymphocyte cell-specific protein-tyrosine kinase; Protein YT16; Proto-oncogene Lck; T cell-specific protein-tyrosine kinase; p56-LCK

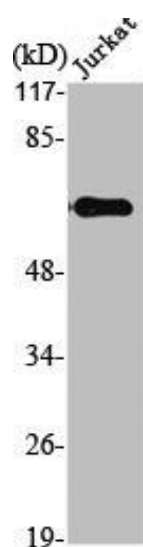
Immunogen:

Synthesized peptide derived from human Lck around the non-phosphorylation site of S540.

Storage:

Liquid in PBS containing 50% glycerol, 0.5% BSA and 0.02% sodium azide.

Product Images



Western Blot analysis of Jurkat cells using Lck Polyclonal Antibody.



Western Blot analysis of Jurkat cells using Lck Polyclonal Antibody.