

KCNC1 Antibody



PACO06607

Product Information

Size:

50ug

Reactivity:

Human, Mouse, Rat

Source:

Rabbit

Isotype:

IgG

Applications:

ELISA, WB, IHC

Recommended dilutions:

ELISA:1:5000, WB:1:500-1:2000, IHC:1:100-1:300

Protein Background:

Gene ID:

KCNC1

Uniprot

P48547

Synonyms:

KCNC1; Potassium voltage-gated channel subfamily C member 1; NGK2; Voltage-gated potassium channel subunit Kv3.1; Voltage-gated potassium channel subunit Kv4

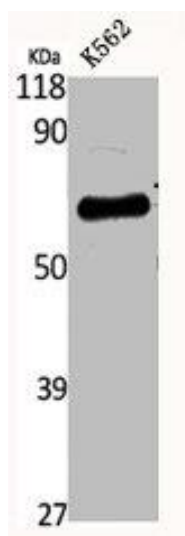
Immunogen:

Synthesized peptide derived from the Internal region of human KV3.1.

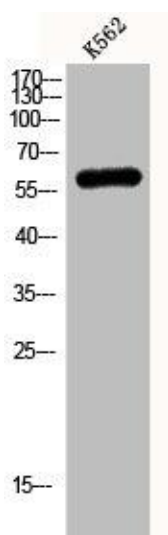
Storage:

Liquid in PBS containing 50% glycerol, 0.5% BSA and 0.02% sodium azide.

Product Images



Western Blot analysis of K562 cells using KV3.1 Polyclonal Antibody.



Western Blot analysis of K562 cells using KV3.1 Polyclonal Antibody.