

SUV39H2 Antibody



PACO06603

Product Information

Size:

50ug

Reactivity:

Human, Mouse

Source:

Rabbit

Isotype:

IgG

Applications:

ELISA, WB

Recommended dilutions:

ELISA:1:40000, WB:1:500-1:2000

Protein Background:

Gene ID:

SUV39H2

Uniprot

Q9H5I1

Synonyms:

SUV39H2; KMT1B; Histone-lysine N-methyltransferase SUV39H2; Histone H3-K9 methyltransferase 2; H3-K9-HMTase 2; Lysine N-methyltransferase 1B; Suppressor of variegation 3-9 homolog 2; Su(var)3-9 homolog 2

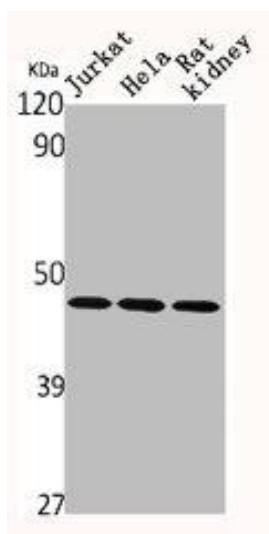
Immunogen:

Synthesized peptide derived from the Internal region of human KMT1B.

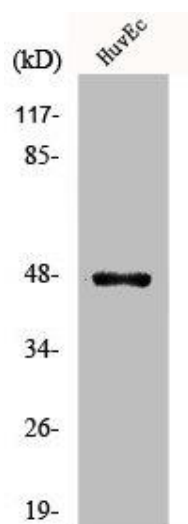
Storage:

Liquid in PBS containing 50% glycerol, 0.5% BSA and 0.02% sodium azide.

Product Images



Western Blot analysis of Jurkat HELA RAT-KIDNEY cells using KMT1B Polyclonal Antibody.



Western Blot analysis of COLO205 cells using KMT1B Polyclonal Antibody.