

KCNJ11 Antibody



PACO06602

Product Information

Size:

50ug

Reactivity:

Human, Mouse, Rat

Source:

Rabbit

Isotype:

IgG

Applications:

ELISA, WB, IHC, IF

Recommended dilutions:

ELISA:1:10000, WB:1:500-1:2000,
IHC:1:100-1:300, IF:1:200-1:1000

Protein Background:**Gene ID:**

KCNJ11

Uniprot

Q14654

Synonyms:

KCNJ11; ATP-sensitive inward rectifier potassium channel 11; IKATP; Inward rectifier K(+) channel Kir6.2; Potassium channel; inwardly rectifying subfamily J member 11

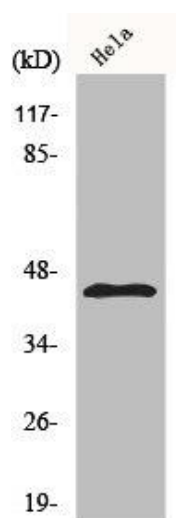
Immunogen:

Synthesized peptide derived from human KIR6.2 around the non-phosphorylation site of T224.

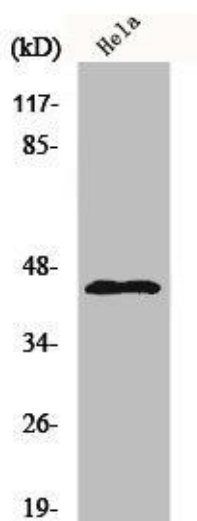
Storage:

Liquid in PBS containing 50% glycerol, 0.5% BSA and 0.02% sodium azide.

Product Images



Western Blot analysis of HeLa cells using KIR6.2 Polyclonal Antibody.



Western Blot analysis of NIH-3T3 cells using KIR6.2 Polyclonal Antibody.