

# ITGB3 Antibody



PACO06588

---

## Product Information

**Size:**

50ug

**Reactivity:**

Human, Mouse, Rat

**Source:**

Rabbit

**Isotype:**

IgG

**Applications:**

ELISA, WB, IHC

**Recommended dilutions:**

ELISA:1:10000, WB:1:500-1:2000,  
IHC:1:100-1:300

**Protein Background:****Gene ID:**

ITGB3

**Uniprot**

P05106

**Synonyms:**

ITGB3; GP3A; Integrin beta-3; Platelet membrane glycoprotein IIIa; GPIIIa; CD antigen CD61

**Immunogen:**

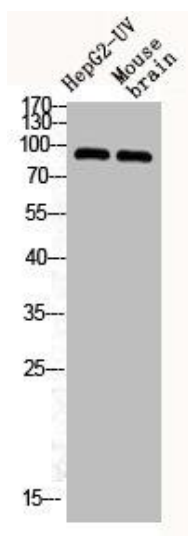
Synthesized peptide derived from human Integrin &beta; 3 around the non-phosphorylation site of Y785.

**Storage:**

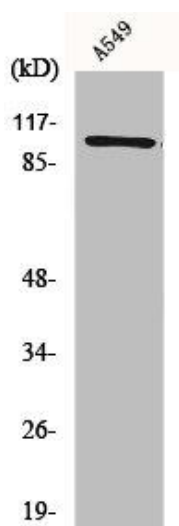
Liquid in PBS containing 50% glycerol, 0.5% BSA and 0.02% sodium azide.

## Product Images

---



Western Blot analysis of HepG2-UV MOUSE-BRAIN cells using Integrin beta 3 Polyclonal Antibody.



Western Blot analysis of A549 cells using Integrin beta 3 Polyclonal Antibody.