

# ITGA3 Antibody



PACO06587

---

## Product Information

**Size:**

50ug

**Reactivity:**

Human, Mouse, Rat

**Source:**

Rabbit

**Isotype:**

IgG

**Applications:**

ELISA, WB

**Recommended dilutions:**

ELISA:1:40000, WB:1:500-1:2000

**Protein Background:****Gene ID:**

ITGA3

**Uniprot**

P26006

**Synonyms:**

ITGA3; MSK18; Integrin alpha-3; CD49 antigen-like family member C; FRP-2; Galactoprotein B3; GAPB3; VLA-3 subunit alpha; CD antigen CD49c

**Immunogen:**

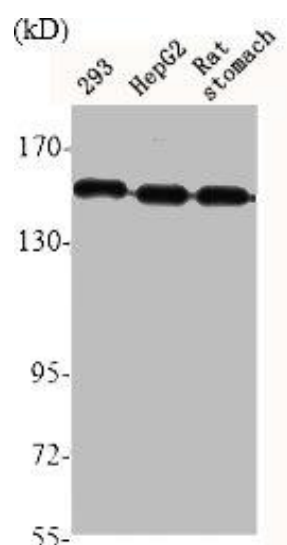
Synthesized peptide derived from the Internal region of human Integrin &alpha; 3.

**Storage:**

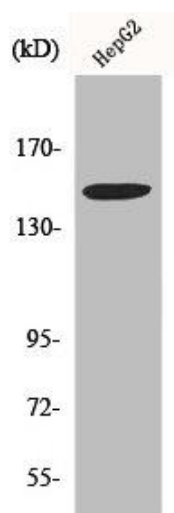
Liquid in PBS containing 50% glycerol, 0.5% BSA and 0.02% sodium azide.

## Product Images

---



Western Blot analysis of 293 HepG2 RAT-STOMACH cells using Integrin alpha 3 Polyclonal Antibody.



Western Blot analysis of HepG2 cells using Integrin alpha 3 Polyclonal Antibody.