

IL7R Antibody



PACO06586

Product Information

Size:

50ug

Reactivity:

Human, Mouse, Monkey

Source:

Rabbit

Isotype:

IgG

Applications:

ELISA, WB

Recommended dilutions:

ELISA:1:40000, WB:1:500-1:2000

Protein Background:**Gene ID:**

IL7R

Uniprot

P16871

Synonyms:

IL7R; Interleukin-7 receptor subunit alpha; IL-7 receptor subunit alpha; IL-7R subunit alpha; IL-7R-alpha; IL-7RA; CDw127; CD antigen CD127

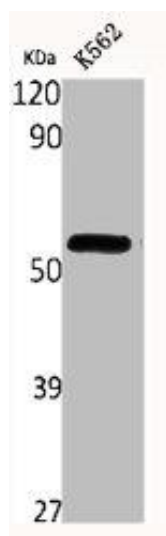
Immunogen:

Synthesized peptide derived from human IL-7R around the non-phosphorylation site of Y449.

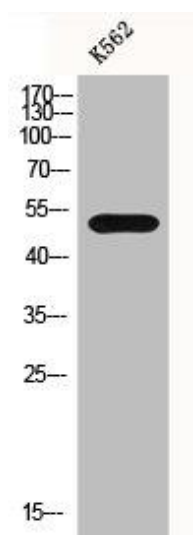
Storage:

Liquid in PBS containing 50% glycerol, 0.5% BSA and 0.02% sodium azide.

Product Images



Western Blot analysis of K562 cells using IL-7R Polyclonal Antibody.



Western Blot analysis of K562 cells using IL-7R Polyclonal Antibody.