

H2AFX Antibody



PACO06550

Product Information

Size:

50ug

Reactivity:

Human, Mouse, Rat

Source:

Rabbit

Isotype:

IgG

Applications:

ELISA, WB, IHC, IF

Recommended dilutions:

ELISA:1:10000, WB:1:500-1:2000,
IHC:1:100-1:300, IF:1:200-1:1000

Protein Background:

Gene ID:

H2AFX

Uniprot

P16104

Synonyms:

H2AFX; H2AX; Histone H2A. x; H2a/x

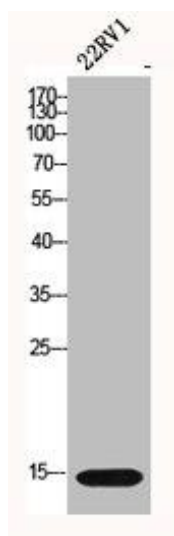
Immunogen:

Synthesized peptide derived from human Histone H2A. X around the non-phosphorylation site of S139.

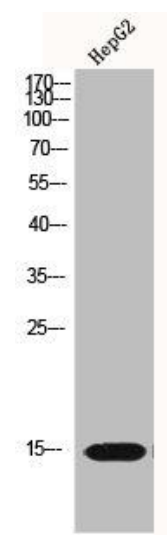
Storage:

Liquid in PBS containing 50% glycerol, 0.5% BSA and 0.02% sodium azide.

Product Images



Western Blot analysis of 22RV1 cells using Histone H2A. X Polyclonal Antibody.



Western Blot analysis of HEPG2 cells using Histone H2A. X Polyclonal Antibody.