

ADRBK1 Antibody



PACO06529

Product Information

Size:

50ug

Reactivity:

Human, Mouse, Rat

Source:

Rabbit

Isotype:

IgG

Applications:

ELISA, WB, IHC

Recommended dilutions:

ELISA:1:20000, WB:1:500-1:2000,
IHC:1:100-1:300

Protein Background:**Gene ID:**

GRK2

Uniprot

P25098

Synonyms:

ADRBK1; BARK; BARK1; GRK2; beta-adrenergic receptor kinase 1; beta-ARK-1; G-protein coupled receptor kinase 2

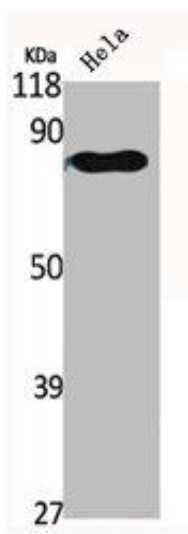
Immunogen:

Synthesized peptide derived from the C-terminal region of human GRK 2.

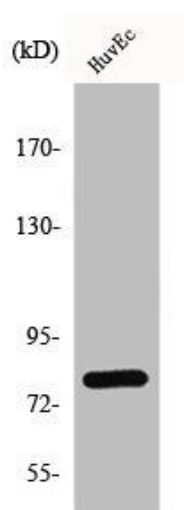
Storage:

Liquid in PBS containing 50% glycerol, 0.5% BSA and 0.02% sodium azide.

Product Images



Western Blot analysis of HELA cells using GRK 2 Polyclonal Antibody.



Western Blot analysis of HuvEc cells using GRK 2 Polyclonal Antibody.