

# GPRIN1 Antibody



PACO06528

---

## Product Information

**Size:**

50ug

**Reactivity:**

Human

**Source:**

Rabbit

**Isotype:**

IgG

**Applications:**

ELISA, WB

**Recommended dilutions:**

ELISA:1:40000, WB:1:500-1:2000

**Protein Background:**

**Gene ID:**

GPRIN1

**Uniprot**

Q7Z2K8

**Synonyms:**

GPRIN1; KIAA1893; G protein-regulated inducer of neurite outgrowth 1; GRIN1

**Immunogen:**

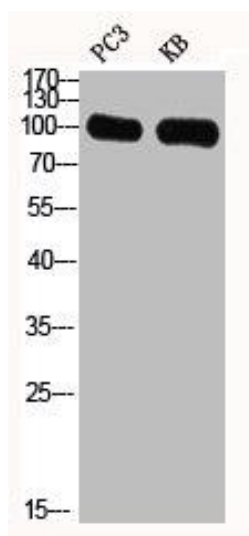
Synthesized peptide derived from the Internal region of human GRIN1.

**Storage:**

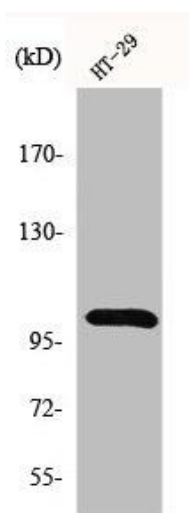
Liquid in PBS containing 50% glycerol, 0.5% BSA and 0.02% sodium azide.

## Product Images

---



Western Blot analysis of PC3 KB cells using GRIN1 Polyclonal Antibody.



Western Blot analysis of HT29 cells using GRIN1 Polyclonal Antibody.