

# GRB10 Antibody



PACO06527

---

## Product Information

**Size:**

50ug

**Reactivity:**

Human

**Source:**

Rabbit

**Isotype:**

IgG

**Applications:**

ELISA, WB, IHC, IF

**Recommended dilutions:**

ELISA:1:5000, WB:1:500-1:2000, IHC:1:100-1:300, IF:1:200-1:1000

**Protein Background:****Gene ID:**

GRB10

**Uniprot**

Q13322

**Synonyms:**

GRB10; GRBIR; KIAA0207; Growth factor receptor-bound protein 10; GRB10 adapter protein; Insulin receptor-binding protein Grb-IR

**Immunogen:**

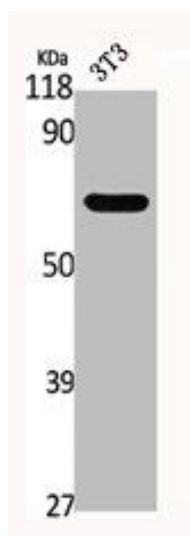
Synthesized peptide derived from human GRB10 around the non-phosphorylation site of Y67.

**Storage:**

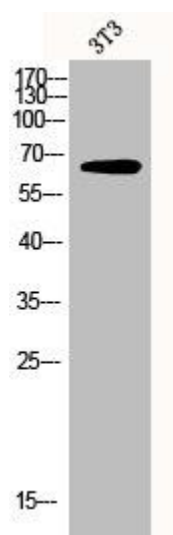
Liquid in PBS containing 50% glycerol, 0.5% BSA and 0.02% sodium azide.

## Product Images

---



Western Blot analysis of NIH-3T3 cells using GRB10 Polyclonal Antibody.



Western Blot analysis of 3T3 cells using GRB10 Polyclonal Antibody.