

GIT1 Antibody



PACO06511

Product Information

Size:

50ug

Reactivity:

Human, Mouse, Rat

Source:

Rabbit

Isotype:

IgG

Applications:

ELISA, WB, IHC

Recommended dilutions:

ELISA:1:20000, WB:1:500-1:2000,
IHC:1:100-1:300

Protein Background:**Gene ID:**

GIT1

Uniprot

Q9Y2X7

Synonyms:

GIT1; ARF GTPase-activating protein GIT1; ARF GAP GIT1; Cool-associated and tyrosine-phosphorylated protein 1; CAT-1; CAT1; G protein-coupled receptor kinase-interactor 1; GRK-interacting protein 1

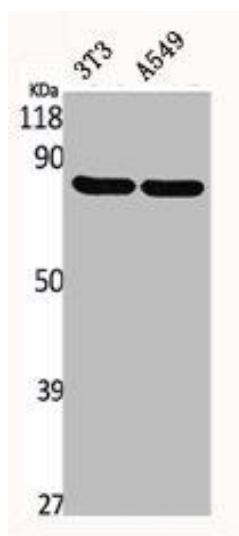
Immunogen:

Synthesized peptide derived from the C-terminal region of human GIT1.

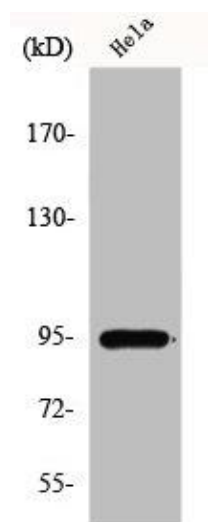
Storage:

Liquid in PBS containing 50% glycerol, 0.5% BSA and 0.02% sodium azide.

Product Images



Western Blot analysis of NIH-3T3 A549 cells using GIT1 Polyclonal Antibody.



Western Blot analysis of HepG2 cells using GIT1 Polyclonal Antibody.