

PACO06510

Product Information

Size:

50ug

Reactivity:

Human, Mouse, Rat

Source:

Rabbit

Isotype:

IgG

Applications:

ELISA, WB, IHC

Recommended dilutions:

ELISA:1:10000, WB:1:500-1:2000,
IHC:1:100-1:300

Protein Background:**Gene ID:**

GHRL

Uniprot

Q9UBU3

Synonyms:

GHRL; MTLRP; Appetite-regulating hormone; Growth hormone secretagogue; Growth hormone-releasing peptide; Motilin-related peptide; Protein M46

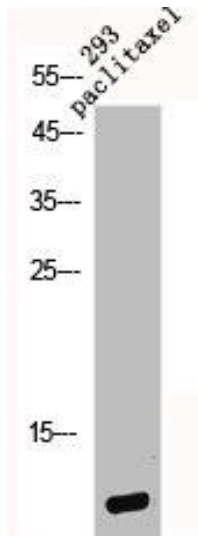
Immunogen:

Synthesized peptide derived from the Internal region of human Ghrelin.

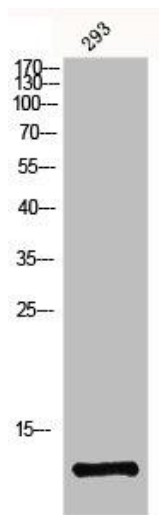
Storage:

Liquid in PBS containing 50% glycerol, 0.5% BSA and 0.02% sodium azide.

Product Images



Western Blot analysis of 293 cells using Ghrelin Polyclonal Antibody.



Western Blot analysis of 293 cells using Ghrelin Polyclonal Antibody.