

# MMP9 Antibody



PACO06509

---

## Product Information

**Size:**

50ug

**Reactivity:**

Human

**Source:**

Rabbit

**Isotype:**

IgG

**Applications:**

ELISA, WB, IHC, IF

**Recommended dilutions:**

ELISA:1:20000, WB:1:500-1:2000,  
IHC:1:100-1:300, IF:1:200-1:1000

**Protein Background:****Gene ID:**

MMP9

**Uniprot**

P14780

**Synonyms:**

MMP9; CLG4B; Matrix metalloproteinase-9; MMP-9; 92 kDa gelatinase; 92 kDa type IV collagenase; Gelatinase B; GELB

**Immunogen:**

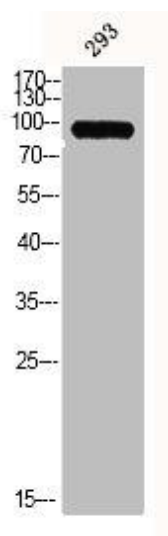
Synthesized peptide derived from the C-terminal region of human MMP-9.

**Storage:**

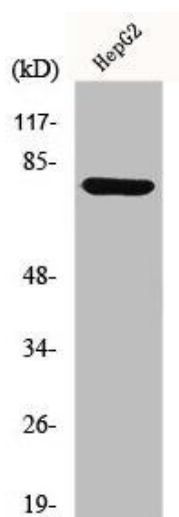
Liquid in PBS containing 50% glycerol, 0.5% BSA and 0.02% sodium azide.

## Product Images

---



Western Blot analysis of 293 cells using MMP-9 Polyclonal Antibody.



Western Blot analysis of HepG2 cells using MMP-9 Polyclonal Antibody.